

Free

Volume 1 Issue 4

PO Box 10 Crookwell NSW 2583 Ph: (02) 4830-1000 ,Fax: (02) 4832-2066, Email: council@crookwell.nsw.gov.au
PO Box 42 Gunning, NSW 2581, Ph: (02) 4845-4100, Fax: (02) 4845-1426, Email: council@upperlachlan.nsw.gov.au
29 Orchard St, Taralga, NSW, 2580, Ph: (02) 4840-2099, Fax (02) 4840-2296, Email: taralga@ceinternet.com.au
Web Site: www.upperlachlan.local-e.nsw.gov.au

July/August, 2006

Rate notice

The Upper Lachlan Shire Council prepares every budget in an environment of constraint but with an awareness of the need to expand its focus, improve the quality of its physical assets and encourage social and economic growth.

Changes

Councils across NSW were advised in late 2005 of a new Local Government mechanism to improve the management of their urban stormwater systems. This provision allows for increases above the capped rate arrangements.

For residents in the towns of Crookwell, Gunning, Taralga and Collector there is a new charge under the heading "storm water charge".

The money raised through these storm water charges will go towards the preparation, installation, maintenance and improvements, of storm water systems in their area. Residents in those towns

will be charged \$25 and commercial customers \$50.

Waste management

Rural farmland rural and residential ratepayers will be charged an additional \$30, which goes towards the maintenance and remediation of the Shire's tips.

The collection and disposal of waste is an important function of every Council. The Upper Lachlan Shire Council is in the process of developing a 'Waste Strategy' to be implemented in 2007/2008 which will be used as a guide for the next 20 years.

This waste strategy will involve the integration of waste services and facilities, build the capacity for better management, increase the recovery of resources previously treated as waste, increase the life of the Shire's landfill sites and distribute the availability and cost of the Shire's services and facilities. A draft of the Council's strategy will be placed on public exhibition for their comments at the end of 2006.



Artist rendering of the new Frail Aged facility

The Crookwell Frail Aged Association, (CFAA), is beginning to see a light at the end of a long tunnel. The CFAA will soon begin the building of a new, purpose built, 44-bed residential aged care facility.

This project has been made possible by a successful capital works funding application from the Federal Government and through negotiations with the Upper Lachlan Shire Council, to secure 8,000m2 of land at the old Crookwell saleyards site.

It is planned that building will commence in November 2006 with an anticipated completion date of the end of July 2007.

In 2004 the CFAA was successful in obtaining a capital works grant of \$890,000 to upgrade the

community's Harley Nursing Home. Included in this grant was an extra \$50,000 to undertake a feasibility study to look at the costs and benefits of co-locating Harley Nursing Home and Banfield House Hostel.

The Harley grant was the fourth grant that the CFAA had received from the Federal Government. The Department of Ageing indicated that the two services, the nursing home and the hostel, might be better to co-locate their services from the perspective of high quality, long term, contemporary aged care provision.

In light of this, consultants were appointed to undertake a review of both the operations and physical environments of the Association.

Following the advice and recommendations of the Department of Ageing, a further capital works funding application was made, based on an estimation of the cost of building a new facility, which had been included in the consultants' report.

In 2005, the application resulted in the CFAA securing a further \$2,627,000 towards its aged care project, which had now become the building of a new facility at the saleyards site. This sum was added to the previous grant allocation of \$840,000, giving the CFAA \$3,467,000 towards the new facility. A further funding application for water management had resulted in another \$50,000 being made available. Added to this, the CFAA now has approval for borrowings totalling \$2m.

The balance of the estimated project cost, including the cost of the land, consultants' fees, furniture and equipment will be in excess of \$7m and will be funded from CFAA cash reserves and sale of existing building stock. While it is recognised that both Harley and Banfield occupy a special place in Crookwell's history, they will both need to be sold as part of the CFAA's contribution to the building project.

The new facility will deliver benefits and innovations for current and future aged care recipients in Crookwell, including better care for groups with special needs, palliative care with privacy, flexible accommodation for couples, as well as a modern aged care environment, with more single rooms and rooms with ensuite bathrooms.

THE \$35,000 COUNTRY ENERGY ART PRIZE FOR LANDSCAPE PAINTING



With entries for the \$35,000 Country Energy Art Prize for Landscape Painting due to close on 21 July 2006, now is the time to finish your painting and get your entry in.

Open to residents within Country Energy's network, the prize goes a long way towards raising the profile of regional artists who are often geographically isolated from city galleries, buyers, contacts and networks.

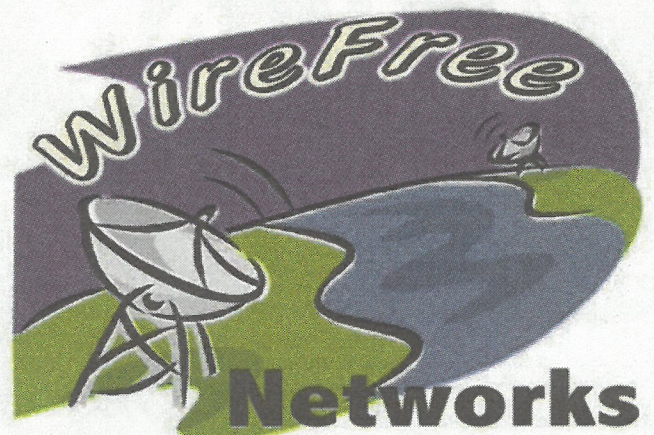
Each year an exhibition of the finalists' works is staged at a different regional art gallery. This year's exhibition and judging will be held at Goulburn Regional Art Gallery.

For more information phone Country Energy on 13 23 56 or visit www.countryenergy.com.au/artprize

Equivalent in prize money to the esteemed Archibald Art Prize for Portrait Painting, the \$35,000 Country Energy Art Prize for Landscape Painting is Australia's richest annual landscape painting competition.

Think you are out of range for broadband internet?

Think again ...



1300 651 638

www.wirefree.net.au

LIBRARIES' MID - WINTER FEAST

Crookwell and Gunning libraries will offer their members the opportunity to pay outstanding library fines with donations of goods during July.

From 1 to 31 July Southern Tablelands Regional Library staff will happily waive library fines and clear members' records in exchange for the donation of items of non-perishable food. By trading in one item of food for every \$5.00 of fines accrued (or part thereof), members can clear up fines and at the same time help others through their donations.

Of course, donations are also welcome from those library customers who have no fines accrued.

Donated goods from our 'Fine Feast' promotion will go to the St Vincent de Paul Society in Crookwell.

All goods received will be distributed to those in need through selected charities across the region including: Goulburn – Anglicare, St. Vincent de Paul and the Salvation Army; Yass and Murrumbateman – St Vincent de Paul, and in Braidwood – the Braidwood Care/St Vincent de Paul. All goods will be distributed within the various local areas, directly aiding local people.

If you would like to help out with this worthy cause, collection points have been set up in Crookwell and Gunning libraries. Further information can be obtained from Library Branch staff.

Fully wired

The ability to communicate quickly and in a cost effective manner is an important tool, especially for those living in a rural environment. The Upper Lachlan Shire is fortunate to have an excellent home-grown and Council nurtured internet provider, Wirefree Networks.

The origins, of this now private company, came through the formation the Community Technology Centre, (CTC), now known as the Upper Lachlan Shire Community Centre.

Meant to give the local community a high-speed Internet service, photocopying, scanning and computer use these CTCs were open in December 2003 and are now considered an important community service. Shire CTC

centres presently operate in Crookwell, Tuena and Bigga.

The Crookwell CTC brought together the present Wirefree Network partners Evan Kneebone, Michael Chamberlain, and Ernie Goeldner.

With a joint interest in high speed communication, which was not available in the Crookwell area at that time, the three developed a wireless system that has grown to the point where the business now employs 12 fulltime staff in Crookwell and 10 contractors to service their ever expanding business.

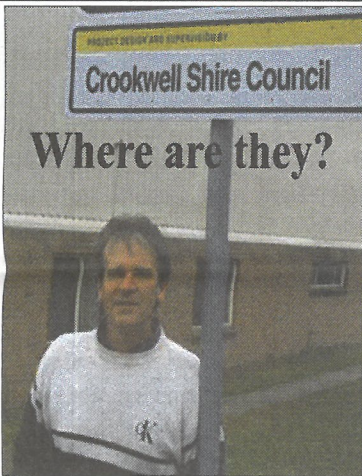
The Council has been very supportive of Wirefree said Ernie Goeldner and their on going assistance is very important.

"The Council's support of the CTC concept as well as its support

of our venture says a lot about the foresight of Council," Ernie continued. "Our business provides high speed Internet service to the rural community, direct employment and high speed Internet service that helps other businesses, reliant on such technology to operate.

"High speed Internet opens the Upper Lachlan Shire business community up to the global market without leaving the friendly confines of our rolling hills," Ernie said. "Everyone benefits."

Wirefree is sensitive to the needs of the rural community in other areas of communication with the introduction of the internet phone more commonly known as 'voice over I.P.' through this system your high speed internet system can be used to phone locally and overseas at a greatly reduced cost.



It's now been over two years since the amalgamation, and there are still road signs which mention the old shires (Crookwell, Gunning or Mulwarree). If you have noticed one of these sign then please let us know of its exact whereabouts.

While they are still around, we're living in the past!

Scott Pollock – 4832 1988

Wombeyan and Abercrombie Caves, inspiring creations of nature

From its humble beginnings as a visitor destination in 1865, Wombeyan Karst Conservation Reserve has grown in popularity to become one of the leading tourist attractions in the southern highlands. Today its natural limestone resource captivates more than 30000 visitors every year.

The reserve encompasses 417 hectares of natural bush land and spectacular Karst landforms on



the southern fringes of the Blue Mountains National Park. Pristine mountain streams dissecting deep limestone canyons, waterfalls, lookouts, and of course the caves themselves have held people in awe since the days of candle light tours in the late 19th century.

Today Wombeyan Karst Conservation Reserve is administered by the NSW National Parks and Wildlife Service, a division of the Department of Environment and Conservation (DEC). On 1 July 2006 the administration

of both Wombeyan and Abercrombie Caves were transferred to DEC from the Jenolan Caves Reserve Trust which had been responsible for the conservation and commercial interests in these reserves since 1989.

Just an hour's drive from Goulburn and Crookwell, or within a few hours from Canberra, Sydney or Wollongong, Wombeyan caves offers an enjoyable experience for the day tripper or those seeking several days of serenity and relaxation. There are nine cozy timber cabins, guest cottage, bunkhouse accommodation as well as abundant camping area set amongst peaceful surroundings. A camper's kitchen and dining

room provide some luxury for those not wanting to rough it.

Guided and self – timed tours of the spectacular limestone caves operate several times daily and there are scenic bushwalks to the many special places of interest around the reserve. A kiosk and visitor centre is open for camping supplies, snacks, cave tickets and information on surrounding attractions.

For accommodation bookings and general information ring Wombeyan Caves on (02)48 435976 or E-mail wombeyan@goulburn.net.au where staff are only happy to assist you.

Notice Board

Show shines September 8, 9, 10.

Australian of the year

Nominations for this year's Australia Day Awards close October 6, 2006. Forms are available at all Council offices and the Crookwell Visitors' Centre. All forms are to be sent to the General Manager John Bell, PO Box 10, Crookwell, NSW, 2583.

Hospital

The Crookwell District Hospital celebrates the centenary of the laying of the foundation stone of the Cottage Hospital on October 6 and 7 this year. The centenary committee is

members (nursing, domestic and maintenance), matrons, visiting doctors and board members since 1906. Items of interest relating to the hospital's history will be on display and if anyone has anything that could be included the committee will be delighted to hear from them. Contact Mona Timo or Beryl Croker at Crookwell Hospital on (02) 4832 1300.

Upcoming events? Or an interest in advertising in The Voice? Contact Hank Spirek, Media Officer, The Voice C/O The Upper Lachlan Shire, PO Box 10, Crookwell, NSW, 2583. The next newsletter is due

Markets

The Taralga markets are held the second Sunday of each Month. Gunning's markets take place the last Sunday of each month. Crookwell hold their market day the first Saturday of every month. 'Hidden Treasures' market at the Crookwell Showgrounds and 'Crookwell on Sale' are happening July 29th.

Upcoming events

Grabine freshwater fishing competition lets you throw in a line August 24 through

ArtTheAD

Art Materials · Framing
Digital Printing · Scanning
Photo Restoration
Canvas Stretching
Graphic Design

358 Auburn Street Goulburn p. 02 4822 6641

THE VOICE



Mayor's column

Welcome aboard

It was with considerable pleasure that I presided over the citizenship ceremony of Kathryn Ann Broadbent at the June 22, 2006 Ordinary meeting of Council. I believe that Mrs Broadbent, a resident of Collector, will be a wonderful addition not only to her town, but to the Upper Lachlan Shire and Australia.

Public Access Policy

The Council has recently made changes to the half an hour period possible to contribute to the decision making process. It is the intent of this policy to encourage as many of the public as possible to contribute to the decision making process. I also rose to speak to a motion calling for a moratorium on wind farm applications but the motion was adopted unanimously and thus was not required for debate.

State Ministers on issues such as roads, rural affairs and local government.

With an operating budget of \$16.8 million the responsibility to produce an equitable management plan has been considerable this year.

Whilst attending the Conference the Upper Lachlan Shire Council's delegation met with other Shires' delegations from Boorowa, Oberon, Yass Valley, Goulburn/Mulwaree and Palerang. This gave us a good opportunity to discuss the approach these Councils were using on issues relating to their LEP especially minimum lot sizes. It also rose to speak to a motion calling for a moratorium on wind farm applications but the motion was adopted unanimously and thus was not required for debate.

The Deputy Mayor John Shaw and myself also attended meetings with

Management Plan 2006/2007

will apply until the REP commences. The Drinking Water Catchments Regional Environmental Council's new Plan (LEP) and supporting documentation are still being developed. Staff and Councilors recently met with the Department of Planning to ensure the process is continuing in the correct manner. It is hoped that a draft document will be available for public comment later in the year.

under SEPP 58 requirements rules and regulations. The existing draft document will be available for public comment later in the year.

Planning

Duty of Care

Council has the obligation to ensure that its road network is as safe as possible within its resources and funding allocation. This 'duty of care' is owed by Council to all road users and ignoring matters highlighted by inspections, or failing to have a review process in place will mean that the Council will not be able to adequately show that it has performed, to its best ability, in cases where vehicular accidents have occurred. To ensure the best outcome for its ratepayers the Upper Lachlan Shire, with guidance from its insurer State-Wide Mutual, has developed a road hierarchy that gives a clear description of the procedures Council is to use when prioritising the Shire's Capital Works and Maintenance Programs. The Council's Road Management system is based on the following criteria:

1. The average daily use.
2. Set a level of service commensurate with a road's classification.
3. Define the types of hazards that require consideration for repair.
4. Define a well-structured road inspection system to identify hazards, deal with customer's complaints and defects identified by inspection.
5. Set priorities on which hazards are to be repaired based on risk.
6. Assist the Council with short and long term planning.
7. Assist Council with determining budgets.

B-Doubles

An important part of the planning process is 'the knowing' of problem roads. At present a detailed survey of potential hazards of the Shire's road network is one third complete. It is providing important information that will be used by the Council in its future planning process. Even one accident that occurs because the Council has not shown due diligence is one too many. The Upper Lachlan Shire Council is committed to using the best practice guideline to insure that it has complied with the specifically addressed processes in the road hierarchy program.

Roads vary considerably in their construction and environment in which they are used. Hence the requirements to construct and maintain also vary. The Upper Lachlan Shire is responsible to its ratepayers and is not in a position to judge the level of risk that other Councils are willing to accept and as such will continue to rely on the professionalism of its staff using as a guideline the road hierarchy provided by State Wide Mutual.

mass of 62.5 tonnes.

over 19 and under 25 metres with a gross mass of 42.5 tonnes and those

categories of B-Doubles those under 19 metres relating to B-Doubles; there are two classifications that are compliant with RTA regulations To correct a misconception relating to roads

LOCALS SUPPORT LOCALS

SPACKMAN
MOTORS



33-35 SPRING STREET CROOKWELL, 2583

PHONE: (02) 4832 1041 - FAX: (02) 4832 1078



COUNTRY SERVICE CENTRE
Phone: (02) 4832 0588

FULL WORKSHOP
FACILITIES

PROFESSIONAL FRIENDLY
SERVICE

ABN 92 003 408 615



QUALITY PRE-OWNED
VEHICLES

24 HOUR TOWING SERVICE



www.upperdachlan.com



Turning the tide of suicide.
Help is as close as a phone.

131114

Emergency after hours contact numbers:

Crookwell/Bigga/Binda/Tuena/Grabben Gullen/Laggan/Taralga/Big Hill areas: Roads, bridges and tips (0429)786-659 and water and sewer (0407)496-358.

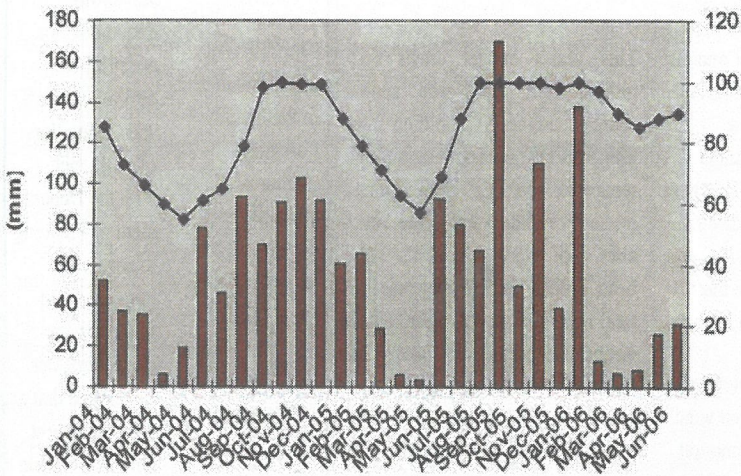
Gunning/Dalton/Breadalbane/Collector/Jerrawa areas: Roads, bridges, tips, water and sewer (0427)454-206. **Police and Fire All Areas any time 000**

July/August, 2006

Volume 1 Issue 4

Crookwell dam levels

■ Rainfall — Dam Level



Water and sewerage

Despite continuing below average rainfall, the water supplies for Crookwell, Gunning Taralga and Dalton are proving reliable and no water restrictions are currently in place.

Water Master Plans are currently being developed for each supply. The Master Plans will identify appropriate infrastructure upgrades to allow for improvements in current

levels of service and to cater for future growth. An important component of the Master Plans is the introduction of Developer Servicing Charges which ensure an equitable contribution by the developer for the cost of infrastructure upgrades necessary for that development.

Taralga Sewerage

The Taralga Sewerage Scheme development application has been with Council and various State

Government Agencies for some time but is nearing completion. Negotiations with the Department of Environment and Conservation are just about finalised and Council hopes to complete its assessment immediately thereafter. A report on the application is expected in July so that the application can be determined. Gaining approval for the development will be a significant step for the process towards supply of the sewerage scheme for Taralga.



Serrated Tussock

How can I help?

Serrated Tussock is the biggest land degradation issue affecting agriculture, land values and the environment in our shire. The irregular seasonal conditions that have been experienced over recent years have lead to a dramatic increase in serrated tussock germination through the Shire. To be successful with a control program all landowners should be acting now to undertake control work while the plants are highly visible.

1. Learn about Serrated tussock, its identification and control.
2. Get to know the location and extent of infestations on your property.
3. Look out for isolated tussocks and remove

them now.
4. Discuss control programs with your neighbour.
Contact Council's Weed Officers if you require assistance or feel you are unable to undertake a complete control program before seeding occurs in November/December. Useful identification techniques and information on the management of Serrated Tussock can be obtained via the department of Primary Industries website at www.dpi.nsw.gov.au or by contacting Council's Weed Officers at the Crookwell, Taralga or Gunning offices. Landholders requiring information on weed control issues can contact Council's Noxious Weeds Manager, Mr. Paul Brown on 4840 2099 or 0428 644 160.

Taralga change

Residents in the village of Taralga have had a change in the domestic waste collection procedures with a new contractor commencing on the 7th July 2006. The old 55L bins are no longer suitable for the mechanical lifter being used and were replaced with 60L wheelie bins. The existing 240L

wheelie bins are suitable for the new operations and continue to be used.

The domestic waste collections occurs mid morning each Friday; residents are requested to have their bins out by 9.00am.

Council has also implemented a domestic waste collection service for the route from Laggan to Taralga and return. The

collection route is from Laggan via the Taralga Road, and the return route via Golspie Road and Peelwood Road. This collection service also commenced on the 7th July 2006.

Residents are requested to ensure their bins are placed on a level area on the left hand side of the road for the direction of travel by the waste collection vehicle by 8.30am

each Friday. Any residents on the collection routes who wish to have the weekly domestic waste collection can register by contacting Jeanne Palmer at Council on 48301006.

240L wheelie bins can be purchased from the Crookwell administration office and/or the Taralga Community Service Centre at a cost of \$55 each.

Elders Crookwell

Geoff.Lloyd@elders.com.au 0428221804



Land Area 243.00 hectares Price: \$750,000
Suitable for cattle production



Capital Region Area Consultative Committee helps communities

We are the contact for Regional Partnerships funding in your area.

Projects can be small to

large and depending on what your community needs. Examples of projects include community halls, rec-

reation facilities, community infrastructure for youth and other groups, business and industry expansion.

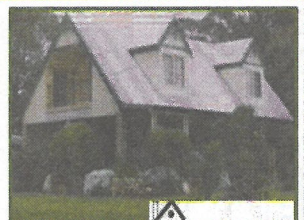
More information? Ring Ian or Marion on 02 6162 4400 to discuss your project idea or go to our website

www.cr-acc.asn.au

JUST LISTED "SPRING HAVEN" GRABBen GULLEN

VERY PRIVATE - 18.57ha pasture improved land with 2 storey - 3 bedroom well built homestead, with attractive perennial garden, 7 mega litre dam with 4 springs plus 40,500 gal. rain water storage. Very good sheds, 15km from Crookwell

Asking \$550,000.00



FIRST TO INSPECT SHOULD BUY CONTACT EXCLUSIVE AGENTS DUNCOMBE & CO PTY LTD CROOKWELL www.duncombeandco.com.au or 02 4832 1732 - 02 4832 1647ah